



BLOOMS
Roofing & Facade Solutions

Beautifying Building Exteriors Since 2009

About us



Blooms India is ISO 9001:2015 certified company with more than a decade experience in beautifying building exteriors in different cities of India. We are importer and distributor for few of leading brands in roofing, cladding, windows, railing and landscaping products from across globe.

The materials we deal with are not only products but a solution to energy efficient buildings. These products not only beautify the building exteriors and enhance the aesthetics, but also scientifically function.

BLOOMS value its relationship with its customers. It strives to be at the forefront of the building industry requirements with the vision to forecast future market demands with excellence.

As a team we deliver products and services that meet the quality, performance and price aspirations of customers.

Why Blooms India?

Quality: All of our brands and products are of European standard in quality. The materials like aluminium, fasteners, hardware, adhesive used for installation is of high standard. We believe in quality work that's why we have a team of skilled workers, supervisor's & engineer's. We don't deliver the project until perfection.

Timely Delivery: We value our customer's time and understand the criticality of project completion, thus we strive to deliver the products within the committed time lines. Our long term relationships with our suppliers allow us to ensure punctual delivery within budget.

Turnkey Solutions: With its dedicated team of trained professionals, BLOOMS has been successfully executing several contracts on turn-key basis at pan India. The fact that most of the leading architects, hoteliers, industrialist builders and farms house owners have approved and used our products & services is a testimony to this.-

MISSION

100% satisfaction to our customers while beautifying their building exteriors

VISION

To become leader in premium roofing and facade products

What We Do?

Roofing Solution

- ✓ Premium Clay Roof Tiles
- ✓ Natural Stone Coated Metal Roofing Tile
- ✓ ASA uPVC Spanish Roofing Tiles Sheets
- ✓ Bitumen Corrugated Roofing Sheets

Facade Solution

- ✓ Ventilated Clay Facade
- ✓ Zinc Cladding
- ✓ WPC Louver
- ✓ Phenolic HPL

Prefab Solution

- ✓ Wooden House
- ✓ Gazebo
- ✓ Pergola

Other Solution

- ✓ Air Bubble Insulation
- ✓ uPVC Gutter System
- ✓ Multilayer uPVC Sheet



Premium Clay Roof Tiles

Flat-10



Length: 475mm
 Width: 285mm
 Weight: 3.5 Kg./Tile
 Units / m²: 10.20 Units.
 Useful length: (Rastrel passage) VARIABLE from 365 - 400 mm
 Units / ml eave: 4
 Recommended minimum slope: 30% - 17° (*)
 Useful width: 245 mm
 Pallet data: 252 units. / 892 Kgs. 336 u. / 1,185 Kgs.
 Minimum order: 5 tiles



TB-10 Tech



Length: 475mm
 Width: 282mm
 Weight: 3.45 Kg./Tile
 Units / m²: 10.3 units.
 Useful length: (Rastrel passage) VARIABLE from 395 - 405 mm
 Units / ml forward: 4.25 - 4.54
 Recommended minimum slope: 30% - 17° (*)
 Useful width: 232 mm
 Pallet data: 210 units. / 771 Kgs.
 Container pallet data: 140 units. / 514 Kgs.
 Minimum order: 6 tiles



TB-4®



Length: 442mm
 Width: 258mm
 Weight: 3.40 Kg/tile
 Units / m²: 12.8 tiles
 Useful length: 370 mm
 Units / ml eave: 5 tiles
 Minimum slope: 30% - 17° (*)
 Useful width: 205 mm
 Lateral overlap: 5.5 cm
 Head overlap: 6.9 cm
 Weight per m² : 44 Kg
 Waterproofing: breathable
 batten sheet ml per m² : 2.7
 Roof tiles per truck pallet: 240 units / 835 Kg Roof
 tiles per container pallet: 180 units / 630 Kg // 240 units / 835 Kg
 Minimum order : 6 tiles



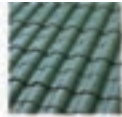
Nature Red



Nature Vilaterra®



Matte Blue



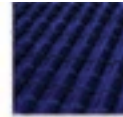
Matte Green



Glazed Green



Glazed Carmin



Glazed Cobalt Blue



Glazed Cognac



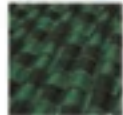
Metallic Lead



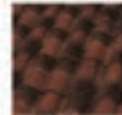
Metallic Cooper



Irisados Blue



Irisados Green



Irisados Cognac



Crystal Elegant"

Special Pieces



Circular Ridge



3 Way Round



4 Way Round



Circular Hip End



Universal Circular
Straight Side Cap



Universal Curved
Sides



Angled Ridge



3 Way Angle



4 Way Angle



End Angle Hip



Universal Angled
Side Cap



Universal Straight
Sides

C-50.21 Celler®



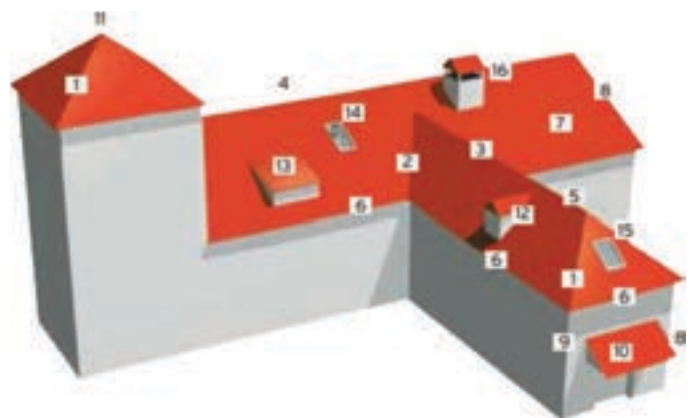
Length: 500mm
 Width: 210mm / 170mm
 Weight: 2.40 kg/tile
 Units / m²: 18 tiles
 Units / ml eave: 8 tiles
 Weight per m² : 43 Kg Units
 per ml Ridge: 2.5 tiles
 Units per lateral ml: 2.5 tiles
 Max. overlap: 19.0 cm
 Min. overlap: 8.0 cm
 Recommended support: Metallic batten or treated wood (*)
 Dry fixing by means of: Curved tile hook Pallet
 data (Nature): 250 units / 620 kg Pallet
 data (Centenaria®): 225 units / 570 kg
 Pallet data (Marbled White): 225 units / 576 kg
 Minimum order: 9 tiles (centennial) /10 tiles (nature)



Elements of a Roof Surface

The name and position of the parts of any kind of roof are shown in the following diagram:

- | | |
|-----------------|-----------------------|
| 1. Hip line | 9. Left edge |
| 2. Valley | 10. Cantilever roof |
| 3. Ridge line | 11. Ornamental detail |
| 4. Monopitch | 12. Mansard roof |
| 5. 3-Ways ridge | 13. Attic |
| 6. Eave | 14. Skylight |
| 7. Roof deck | 15. Windows' roof |
| 8. Right edge | 16. Chimney |



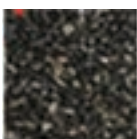
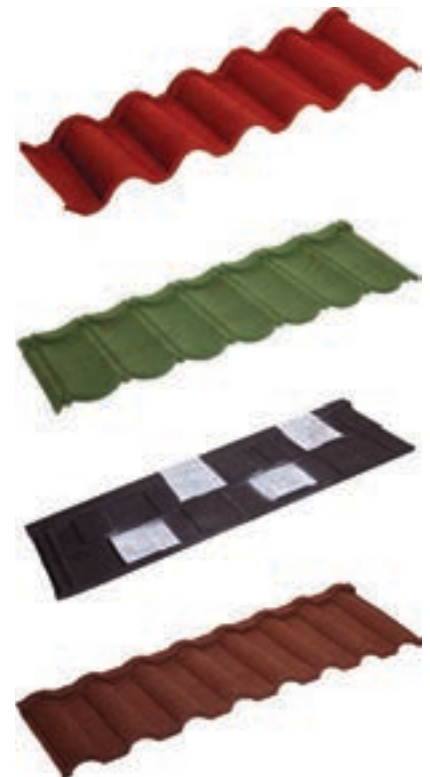
Natural Stone Cotted Metal Roofing Tiles

Metal Roofing Tile Panel is made of Aluminium with coating of Zinc, which is Aluzinc. Water repellent igneous rock formed 500 years, is coated on to the base aluzinc panel. Due to this, the Aluzinc stone coated panels are resistant to water, sound and also UV repellent and thereby reducing the heat inside the room.

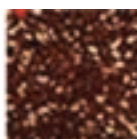
Due to the Zinc composition, this product is highly corrosion resistant. Also it is highly reflective to heat thereby giving climatic insulation for building in hot or cold conditions. Due to the shield created, overall Air conditioning cost will come down compared to GI and Aluminium sheets.

The total square meter weight of two metal tile panel is just 6 Kg, making it one eighth lighter than the clay tiles. Overall length of the panel is equal to 7-8 clay or concrete tiles. Installation is made easy and fast due to this. This world class product, won't increase extra load on buildings as the product itself is light as well as the structure needed is lighter than clay or concrete tiles. It can be cut, bend to shape and installed easily.

As per minimum order quantity, customized colours are possible. Maintenance and Repair work needed is negligible with this product. It can be used in varied applications, environments friendly, recyclable, aesthetically beautiful preferred by



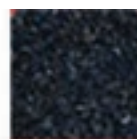
Charcoal



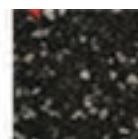
Terra Cotta



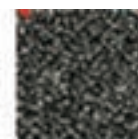
Naturel Red



Midnight Blue



Granite Black



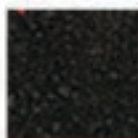
Silver Gray



Orange



Sapphire



Black



Brick Red



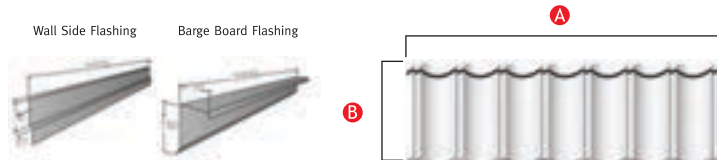
Green



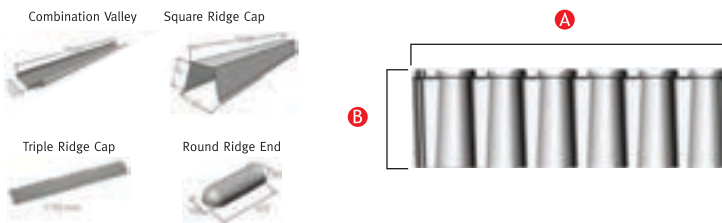
Brown

Accessories

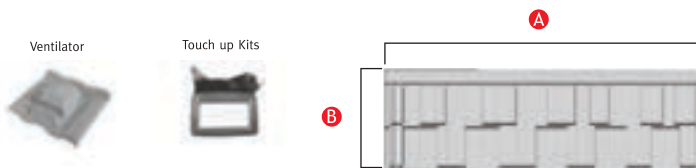
The metal tile panels and accessories can be designed, produced and implemented.



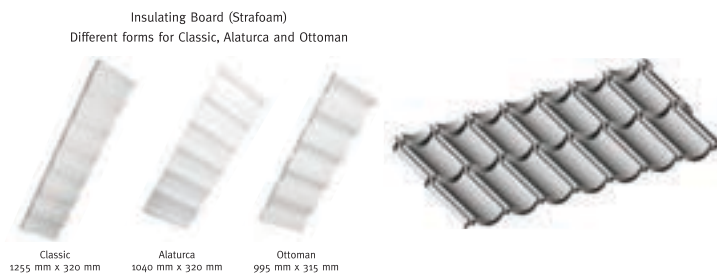
CLASSIC	
Tile Size (LXW)	: 1350 mm X 430 mm
Installed Exposure (LXW)	: 1300 mm X 370 mm
Min. Roof Pitch	: 12°
Weight Per Tile	: ±3.1 kg
Tiles Per Square (tiles/m ²)	: ±2.08 pes Im ²
Weight Per Square (weight/m ²)	: ±6.8 kg/m ²
Packing	: 500 pcs/pallet, ±1500 kg/pallet



OTTOMAN	
Tile Size (LXW)	: 1290 mm X 385 mm
Installed Exposure (LXW)	: 1190 mm X 358 mm
Min. Roof Pitch	: 12°
Weight Per Tile	: ±2.9 kg
Tiles Per Square (tiles/m ²)	: ±2.3 pes Im ²
Weight Per Square (weight/m ²)	: ±6.7 kg/m ²
Packing	: 500 pcs/pallet, ±1450 kg/pallet



SHINGLE	
Tile Size (LXW)	: 1325 mm X 430 mm
Installed Exposure (LXW)	: 1250 mm X 368 mm
Min. Roof Pitch	: 15°
Weight Per Tile	: ±3.0 kg
Tiles Per Square (tiles/m ²)	: ±2.2 pcs Im ²
Weight Per Square (weight/m ²)	: ±6.6 kg/m ²
Packing	: 500 pcs/pallet, ±1500 kg/pallet



CLASSIC	
Tile Size (LXW)	: 1180 mm X 510 mm
Installed Exposure (LXW)	: 1130 mm X 442.5 mm
Min. Roof Pitch	: 12°
Weight Per Tile	: ±3 kg
Tiles Per Square (tiles/m ²)	: ±2 pes Im ²
Weight Per Square (weight/m ²)	: ±6 kg/m ²
Packing	: 500 pcs/pallet, ±1500 kg/pallet

ASA uPVC Spanish Roofing Tile Sheets

- Features** :
- Easy to install and economical and lightweight
 - Durability with flexible structure
 - Resistance to weather conditions and sunlight
 - Environmental protection
 - Rain-free ground

Width : 1050 mm

Length meter : 2.40/2.62/3.06/3.72/4.60/5.7

Thickness : 2.3 mm

Colors : Teracotta, Brick Red, Grey, Green

Applications : Residential, Terrace, porch, prefabricated and work places, Vault roof systems, Schools, hospitals and social facilities, on all roofs can be used.



Hip Starter



Top Ridge



Side Ridge



Screw & Cap



Three-Way Ridge



Bitumen Corrugated Roofing Sheets

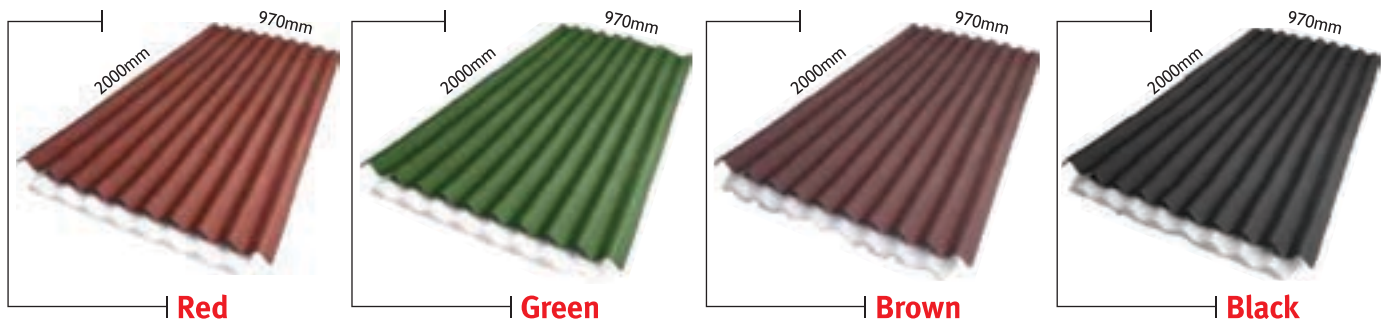
Production Standard and Quality of this product is world class. This environment friendly product with flexible structure, strength against UV rays, resistant to chemical and biological substances does not need the care given for other products.

This product is made up of bitumen immersed in highest quality organic fibre and paper there by increasing the strength and resistance. They can be used in all climates and conditions, thanks to the special pigments used with paint pistol.

100% green products and 100% responsible production.

Width	:	970mm (±2%)
Length	:	2000mm (±1%)
Sheet Area	:	1.94m ² (±2%)
Net Coating Area	:	1.58m ² (±2%)
Packaging	:	225pcs./Pallet
Weight	:	6.5kg Sheets

- Reduce Heat
- Reduce Rain Noises
- Easy to Apply
- Water Tightness
- Light Weight
- Durable



Accessories

Roof Ridge



Width X Length : 485 x 1000m

Packaging : 20 pcs. / pack

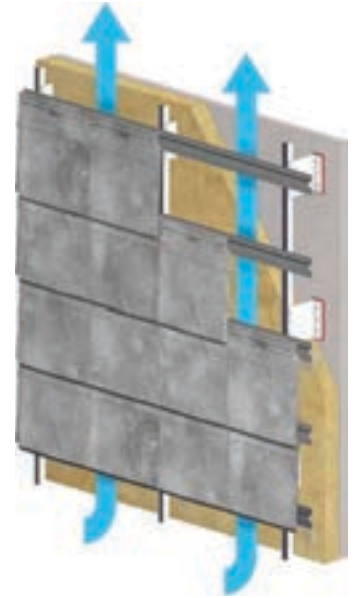
Ventilated Clay Facade

With the constant evolution in exterior cladding in the architectural sector, innovative solutions in ventilated facade systems continue to be brought to market. BorjaCLAD facades are a new format of exterior cladding for buildings created as a result of the technological revolution which has occurred in Tejas Borja's ceramic products over the last few years.

The high resistance of our ceramic products to the harshest elements is well known. Proof of this are the thousands of projects around the world which have already used tiles from our company.

Whether it be to renovate an existing facade or for a new build, ventilated facade systems are an ideal, economical and easily-installed solution which also offers designers a wide variety of finishes and formats to ensure the complete integration of their project into its surroundings.

To ensure the optimal performance of the facade and straightforward installation, the tile formats used in the system are our latest flat models: FLAT-5XL®y FLAT -10



Benefits of this system

Water Tightness

Protection from the wind and rain. Reduction in moisture condensation thanks to the ventilated cavity.

Easy to Install

The facade cladding is installed methodically, following established steps. As only mechanical fixings are used in the cladding system, replacing one or various elements is straightforward.

Energy Saving

The circulation of air prevents heating of the interior face of the facade, reducing the need for air conditioning. Moreover, it enables the installation of continuous insulation, without thermal bridges, to prevent loss of heat in winter and gains in summer.

Invisible Fixings

A complete technical system, installed over an aluminium substructure resistant to corrosion in any environment, with hidden fixings and a perfectly plumb facade.

Differentiation

New aesthetic options for facade design, with the possibility of using the same cladding on the roof and facade. Our wide range of finishes in various formats give a distinctive personality to each project. Suitable for new builds and renovations.

Minimal Maintenance

The tiles are made from a material designed to resist the most adverse weather conditions. Consequently, using them in facades means hardly any maintenance is necessary to preserve their appearance and functionality.

FLAT-5XL® / FINISHES

Plain COLOUR



Leon Matte

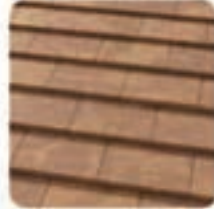
Ceramic SLATE



Nepal Orange

Paris Ocre

Ceramic OXIDE



Tokyo Cooper

Ceramic COTTO



Ibiza Pink

Ceramic STONE



Austin Grey

Denver Gold

Denver Iris

Ceramic CEMENT



Sidney Graphite

Ceramic MARBLE



Roma Dark

FLAT-10/ FINISHES

Plain COLOURS



Graphite

Chocolate

Natural Black

Mild Grey

Leon Matte

Ceramic SLATE



Nepal Orange

Paris Ocre

NATURE



Roja

Roja Musgo

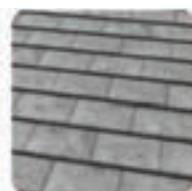
Ceramic Wood



Toronto Oak

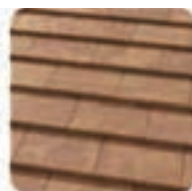
Weather Cedar

Ceramic Cement



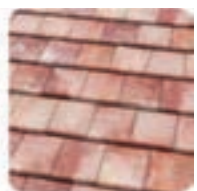
Sidney Graphite

Ceramic OXIDE



Tokyo Cooper

Ceramic COTTO



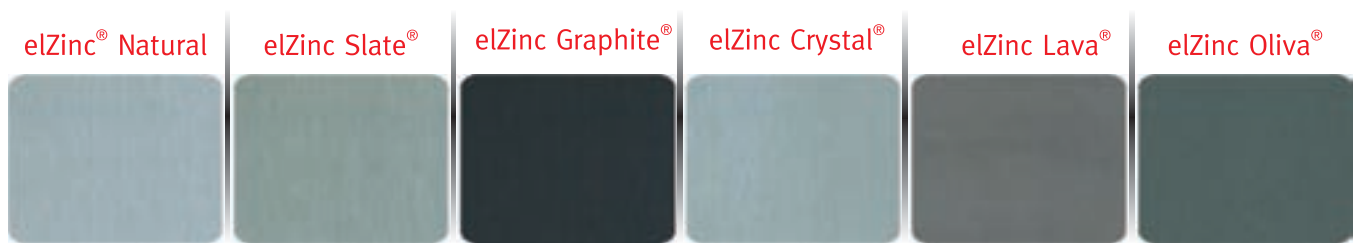
Ibiza Pink

Zinc Cladding

elZinc Alkimi®

Zinc cladding and roofing allows a great deal of freedom when designing. The elZinc Alkimi® aesthetic finishes give character and authenticity to your architectural projects.

Manufactured from elZinc® Natural, according to EN-988 and ASTM B-69 standards, through a unique surface treatment carried out with elZinc technology and know-how, the elZinc Alkimi® range respects and maintains intact the zinc's original properties.



elZinc /Rainbow®

Colour is an essential component of architecture which forms an integral part of the building identity. Versatile and aesthetic, zinc doesn't have to be grey.

elZinc Rainbow® is a range of colored architectural zinc which combines zinc elegance with the richness of colours. Available in 6 standard attractive finishes - red, blue, green, black, gold and brown - elZinc Rainbow® harmoniously integrates into its surroundings.

Produced according to EN988 and ASTM B-69 standards, elZinc Rainbow® is made by applying mineral pigments to our pretreated zinc. Its organic coating is a very attractive and durable finish that provides additional protection against corrosion.



elZinc Tiles

Made of elZinc[®] zinc-titanium (EN-988 standard), they lend themselves to many styles of architecture, harmonising perfectly with the surrounding materials.

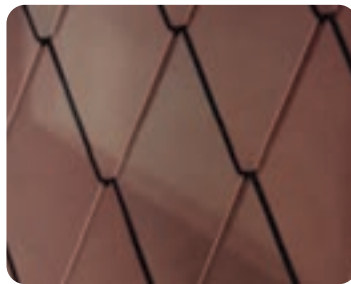
Whether for new-build or refurbishment projects, the elZinc range of five distinct tile designs are a great solution for wall cladding and for weathering roofs pitched over either 25° or 45°, depending on the designs chosen.

Square tile



- Elements number/m²: 9.
- Approx. weight/m² (in 0,7 mm): 7,3 kg/m²
- Dimensions: 400 X 400mm (parallel edges) 512mm x 555mm (height x width).
- Piece n°/box: 24
- Pitches : >25°
- Geometry: fla

Rhomboid tile



- Elements number/m²: 14.
- Approx. weight/m² (in 0,7 mm): 7,8 kg/m²
- Dimensions: 560mm X 280mm.
- Pieces number/box: 35.
- Pitches : ^25°
- Geometry: flat and slightly curved

Diamond tile



- Elements number/m²: 9,12
- Approx. weight/m² (in 0,7 mm): 7,2 kg/m²
- Dimensions: 611mm X 415 mm
- Pieces number/box: 20
- Pitches : ^25°
- Geometry: flat and slightly curved

Pointed fish scale tile



- Elements number/m²: 72
- Approx. weight/m² (in 0,7 mm): 10,9 kg
- Dimensions: 240mm X 142mm
- Pieces number/box: 144
- Pitches : H5°
- Geometry: flat and slightly curved

Rounded fish scale tile



- Elements number/m²: 41
- Approx. weight/m² (in 0,7 mm): 7,4 kg/m²
- Dimensions: 280mm X 200mm
- Pieces number/box: 104
- Pitches : H5°
- Geometry: flat and slightly curved

WPC Louver

Fiber Wood Louvers

Developed with the latest extrusion technologies, Exclad Fiber wood louvers combines the durability of co-extrusion and the warm appearance of wood. The false open-joint profile and hide screw design trendy and modern, gives rhythm to the facade while preserving the natural character and warmth of wood. Random nuances in colors reinforce the realistic impression of a natural, untreated material.

High-tech polymer wood, outer consist of 100% engineering plastic, core composed of 65% sawdust and 30% recycled polyethylene and 5% compound. No toxic products, no glue or heavy metals. Manufacturer from 95% recycled materials. Exclad cladding boards are also 100% recyclable. An Ecological alternative to tropical wood. An environmentally friendly product.

For many individuals, the composite solution is ideal for all types of projects (renovation or new deck).

The Exclad Fiber wood louvers structure is equipped with lugs on the backs of boards, which naturally create a thin space for air between the support and the siding. In vertical installations, they help instal boards on a simple wood or metal frame only. Another advantage, the Exclad board coating is rot-proof and has no risk of any moisture pick-up. Air circulation is only for ventilation of the support.



Outdoor Co-extrusion WPC Cladding

Product Ranges

EEC 33mm			
Code	Planks	Colour	Dimension
EEC 602		Teak	2900 x 165 x 33mm
EEC 603		Ipe	
EEC 601		Dusty Grey	
EEC 604		Charcoal	

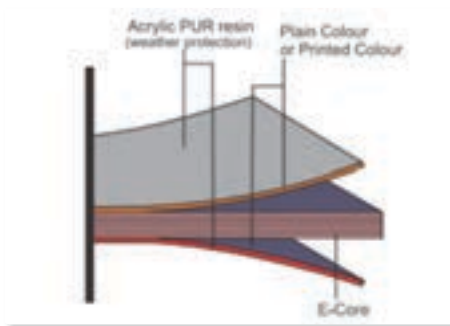
EEC 26mm			
Code	Planks	Colour	Dimension
EEC 801		Teak	2900 x 219 x 26mm
EEC 802		Ipe	
EEC 803		Thermo	
EEC 804		Charcoal Gray	

Phenolic HPL

Composition of Compact HPL

Exterior Compact HPL are produced by:

- Impregnating large amount of kraft papers having resin-absorbing capability and Pressing under high temperature of $> 170^{\circ}\text{C}$ and pressure of $> 5\text{MPa}$.
- Manufactured under European norm EN 438 and to ISO 4586 with density of $>1350\text{ kg/m}^2$.



Exterior Compact HPL are comprise by-

- Virgin Kraft Paper (A grade)
- Decorative Papers (All Blue scale 6 Plus Decor Paper from German Companies Like Schattdecor, Chiyoda)
- Phenolic Resins (Formaldehyde)
- UV Protection Film (Evonik)
- Transportation Layer (Polyethylene)

Scope of Compact HPL in a building

- Facade Element
- Canopy/Porch
- Ceiling/Attic
- Louvers/Sunscreen
- Pergola
- Pillar Cladding
- Railings
- Boundary Wall
- Entrance Gate
- Shaft Cladding
- CNC Perforation

Installation system

Adhesive System (8mm)



- ✓ Wall
- ✓ Insulation
- ✓ HPL
- ✓ L-Anchor
- ✓ AL Profile
- ✓ DS Tape

Coloured Rivet System (6mm)



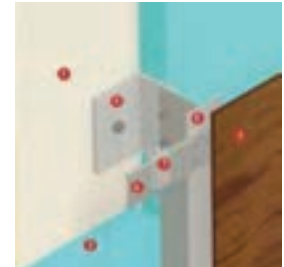
- ✓ Wall
- ✓ Insulation
- ✓ HPL
- ✓ L-Anchor
- ✓ AL Profile
- ✓ Rivets

Siding System (6/8mm)



- ✓ Wall
- ✓ Insulation
- ✓ HPL
- ✓ L-Anchor
- ✓ AL Profile
- ✓ Clamping Profile
- ✓ Rivets

Hanger System (10mm)



- ✓ Wall
- ✓ Insulation
- ✓ HPL
- ✓ L-Anchor
- ✓ AL Profile
- ✓ AL Rail
- ✓ Hanger

Exclade Decors



8001



8033



8037



8053



8054



8071



8076



8090



8092



9007



9012



7017



9021



9022



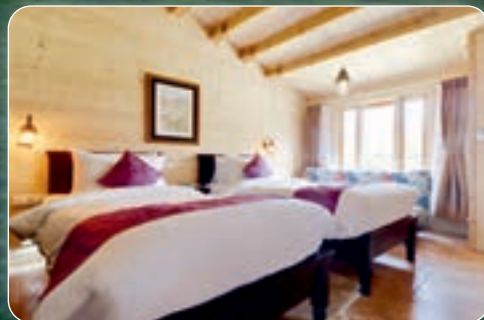
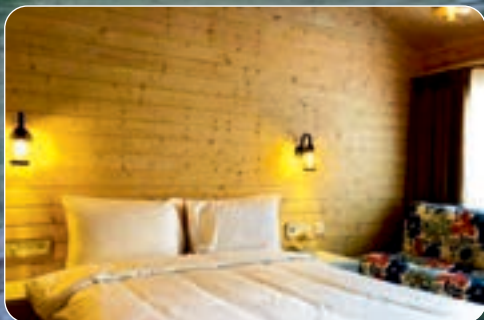
9062



7000

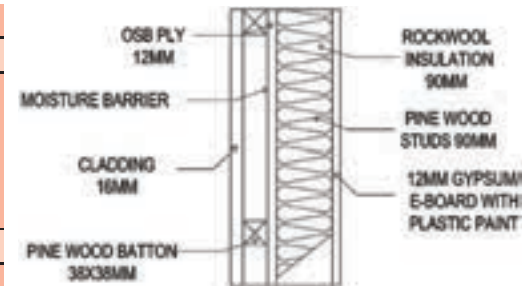
Services we offer

- ▶ Design 'n' Build by PWH
- ▶ Resorts and Hotels
- ▶ Restaurants
- ▶ Tree House
- ▶ Wooden Cottages
- ▶ Wooden Villas
- ▶ Terrace House
- ▶ Farm House
- ▶ Gazebo
- ▶ Pergola

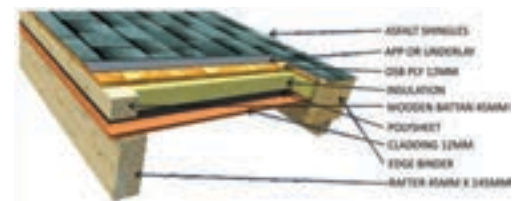


Technical Specifications LWF

Roof Style :	Specify Classic ridge, Modern or other.
Roof Overhangs :	Roof projection 18-24 inches.
Wall Details :	1st layer 12mm thick cladding/gypsum finish. 2nd layer 38mm x 90mm solid wood studs with distance of 16" c/c, will be stuff by insulation material. 3rd layer 12mm thick osb ply. 4th layer tyvek home wrap(moisture barrier). 5th layer 38x38mm battan for external cladding with bug mesh.
Floor Joints :	Bottom plate will be connected with grouted foundation bolt with termite barrier.
Deck Area :	38mm x 125mm deck wooden planks.
Door :	Laminated frames to limit warping and openings, fit latch, cylinder mortice lock and stainless finish handles.
Windows :	Wood or UPVC with standard detail.
Flooring Detail :	Solid wood floor, E-Board, poly sheet, foam under the laminated flooring.
Roof Beams :	Use 145mm x 38mm, 145mm x 45mm, 165mm x 58mm structural wood.
Roof :	Our roof with in 7 layers 1st layer will be 38mm x 145mm solid wood rafter 2nd layer will 12mm thick wooden cladding. 3rd layer will be 50mm x 50mm solid wood planks with distance of 24" c/c, 4th layer will 12mm thick water proof ply/OSB. 5th layer will 1-2 mm thick app membrane / underlay. 6th layer will 3mm thick fibre glass shingles. 7th layer can be ridge vent to release trapped moisture from structure.
Roof Strength :	Rated to carry 80 kgs/sqm.
Base :	P/F of steel plinth in various sections as per drawing.
Electrical works :	All the electrical wires, MCB, DB, Switch will be the havells/finolex.
Plumbing works :	All the plumbing CPVC/PVC pipe brand will be ashirwad/prakash and other supporting.



Wall Section Details (Thickness 168mm)



Insulated Roof Details

Treatments: Externally apply 1 coat UV protected stain and 2 or 3 coats of finish and preservative 3 year waterproof protection; waterproof protector to have colour pigments to provide UV protection.

ADVANTAGES

Advantages of wooden houses

Energy Efficient

Wood is a natural insulator and is very effective in insulating cold and heat. This translates into saving a significant amount of energy as against stone, concrete and brick houses.

Environmentally friendly

Made from the sustainable, renewable timber of forests in northern Finland and produced without the use of fossil fuels, these buildings are not only environmentally friendly but also sustainable

Natural product

Grown in the clean, pure air of northern Finland, where reindeer and moose roam wild and lichen, a perfect indicator of clean air, grows in abundance, our timber is both natural and organic.

Economically efficient

Wooden homes are quick and cost effective to build as compared to the buildings made out of stone or concrete.

Safe, Light, Sturdy & Durable

One of the many reasons why wood is still used today, despite huge strides in concrete engineering, is its durability, weight and safety. Wood can bend slightly making it more flexible as compared to bricks and concrete

Architecturally versatile flexible

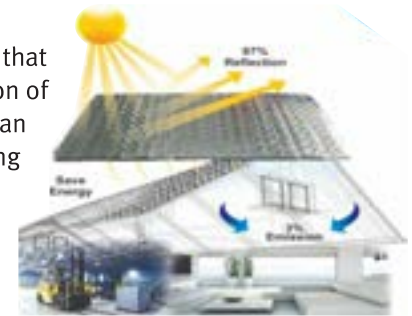
Wooden buildings can be easily modified. Making additions, changing the plot size or moving around rooms within the design are feasible, allowing you to make changes with



Air Bubble Reflective Insulation

Why we need Insulation?

Among all energy efficiency technologies, advanced heat insulation stands out as the one that could reduce energy consumption most effectively. It prevents the progression or transmission of heat, moisture, shock or sound from one medium to another. Insulation during summer can block up to 97% of radiation heat coming from sun & reflect 97% heat back in the building during winters. It is energy saving product used regularly in green buildings.



Characteristics

1. Resist up to 95-97% ultraviolet radiation.
2. Strong but clean, thin, lightweight flexible and cushioning.
3. Lightweight product, which means easier installation, more efficient construction, and does not consume valuable space within the building envelope when used in building construction.
4. Waterproof, moisture proof, anti-static, tearing strength, anti-pull, leak resistance.
5. Easily stapled, nailed or glued into place.
6. Safe to handle, with no special clothing or breath equipment. Invariable if it is attacked repeatedly.
7. Heat reflection, heat insulation, sound insulation & anti radiation.

Uses:

- ✓ Metal
- ✓ Live Stock
- ✓ Pipes
- ✓ Cold Room
- ✓ Ceiling
- ✓ Under Deck
- ✓ Vertical
- ✓ Concrete Roof
- ✓ Ducting
- ✓ Asbestos Roof Sheet
- ✓ Refrigerated Containers

Specifications

Thickness	Roll Size (Width x Length)
4 mm	1.25 m x 60 m
8 mm	1.25 m x 40 m
12 mm	1.25 m x 30 m
20 mm	1.25 m x 25 m

Technical Data

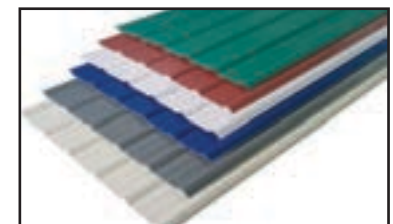
	4 mm	8 mm	12 mm	20 mm
Specialisation	Bothside Aluminum Foil with Single Layer of Small Bubble	Bothside Aluminum Foil with Double Layer of Small Bubble	Bothside Aluminum Foil with Double Layer of Big Bubble	Bothside Aluminum Foil with Double Layer of Big Bubble
R Value	2.95 M ² KW	3.10 M ² KW	3.20 M ² KW	3.70 M ² KW
Emissivity	3%	3%	3%	3%
Reflectivity	97%	97%	97%	97%
Temperature Difference	6°C to 8°C (Depending on all parameters)			

Multilayer uPVC Roofing Sheets

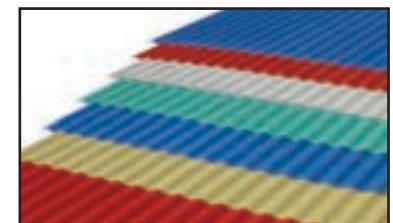
Material Structure

1. Surface Layer - The material is ultra-weather resin, to block the solar ultra violet and reduce the coefficient of heat conductivity, ensure product durability and resistance to chemical corrosion.
2. Surface Intermediate Layer - contains Multi foam giving to the material light weight and improved sound and thermal insulating properties.
3. Underlying layer - for just a good material toughness special to ensure the strength at the same time, increase the rigidity and light illumination.

Bloomex uPVC Sheet



Trapezoidal Profile



Round Profile



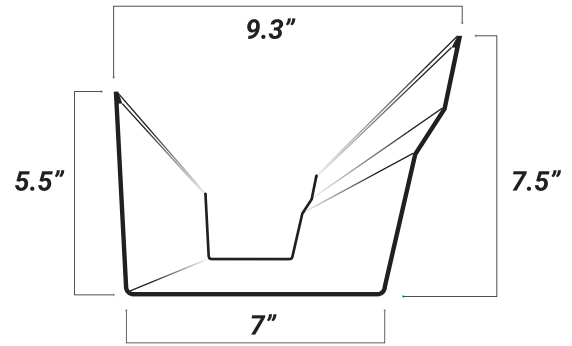
Top Ridge



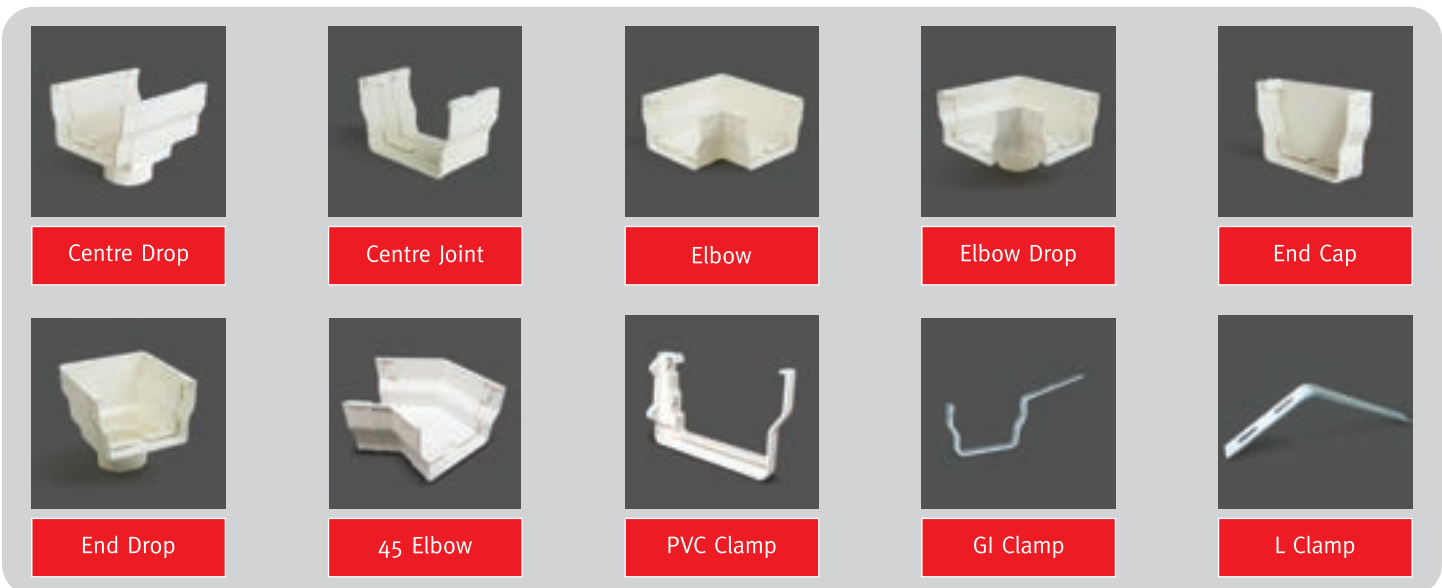
Side Ridge / Valley

Profile Name	Thickness (mm)	Width (mm)	Standard Length	Color
Trapezoidal Wave Profile	1.5 to 4 mm	1130 mm	upto 6 mtr.	Blue, White, Green, Grey, Terracotta
Round Wave Profile	1.5 to 4 mm	1130 mm	upto 6 mtr.	Blue, White, Green, Grey, Terracotta

Hybrid Gutter System

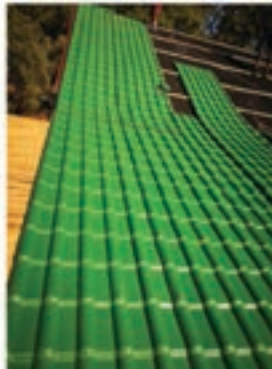


Square Gutter System

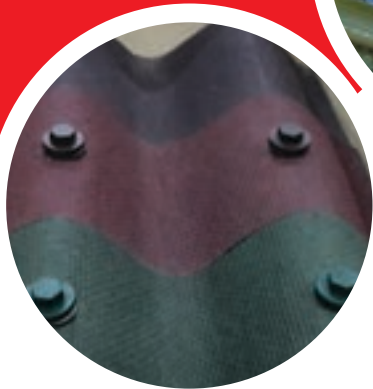
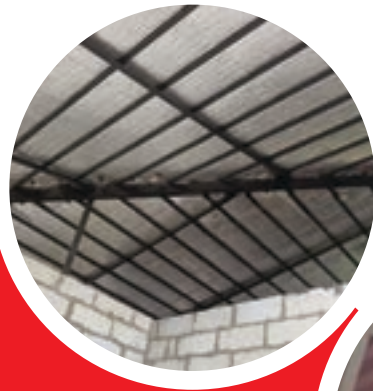


Our Projects





and many more...



BLOOMS

Roofing & Facade Solutions



© Blooms India Incorporation
Madhav Kunj Mustkil No. 98, Killa No. 9
100 Foot Road, Ghitorni, New Delhi-110030

+ 91-8181812648
info@bloomsindia.net
www.bloomsindia.net